

Boise State University 10th Day Profile of New Academic Freshmen Fall 2006

Notes: This profile reflects the statistics for first-time, degree-seeking, academic students, including new freshmen who completed university courses while in high school. The following groups are excluded from the cohort: nondegree-seeking, concurrent high school, Bridge, second undergraduate degree and new students who started in Summer 2006.

Yield Statistics

	Number	Percent
New Freshmen Apps	4417	46.3% of all applicants
New Freshmen Admits	3098	70.1% of freshman applicants
New Freshmen Enrolled	2261	73% of freshman admits

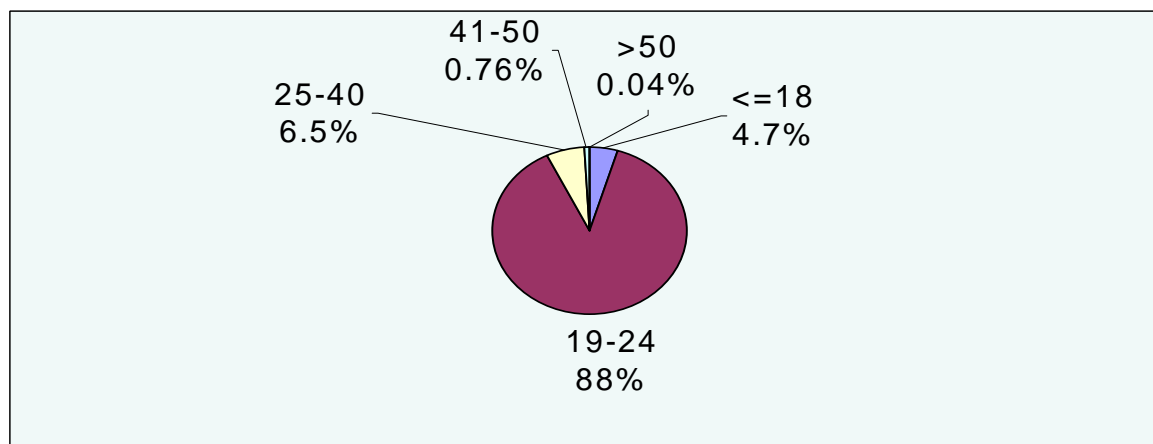
Original Admission Classification

	Number	Percent
Conditional/Special	1571	69.5%
Regular	344	15.2%
Provisional	346	15.3%

Denied Admission

	Number	Percent
Originally Denied	719	16.3% of freshman applicants
Petitions Approved	11	1.5% of denied
Petitions Approved – enrolled	11	100% of approved petitions
Changed to Nondegree	183	25.5% of denied
Changed to ND – enrolled	137	74.9% of denied then enrolled nondegree
Remain Denied	364	50.6% of denied

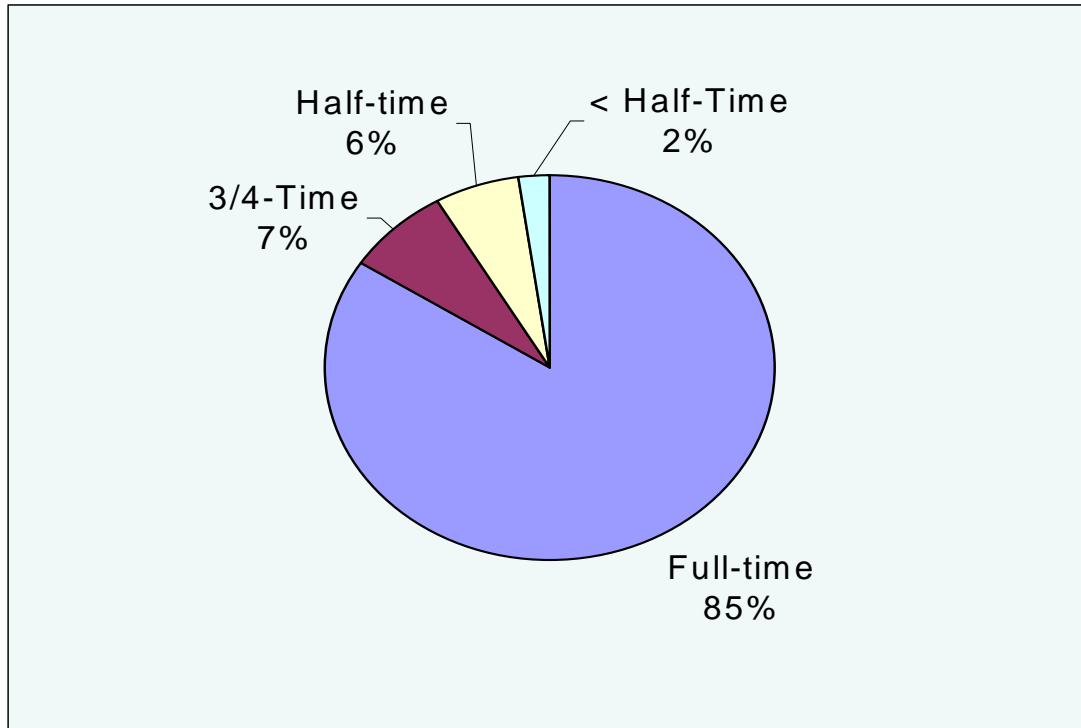
Age



Gender

	Number	Percent
Female	1240	54.8%
Male	1004	44.4%
Undeclared	17	.8%

Credit Load



Ethnicity

	Number	Percent
Asian American	82	3.6%
Black/African American	44	1.9%
Hispanic	178	7.9%
Native American	25	1.1%
White	1835	81.2%
Did Not Respond	97	4.3%

Citizenship

	Number	Percent
International	30	1.3%
Permanent Resident	55	2.4%
US Citizen	2171	96.1%
Not Indicated	5	.2%

Resident/Nonresident

	Number	Percent
Resident	1956	86.5%
Nonresident	305	13.5%

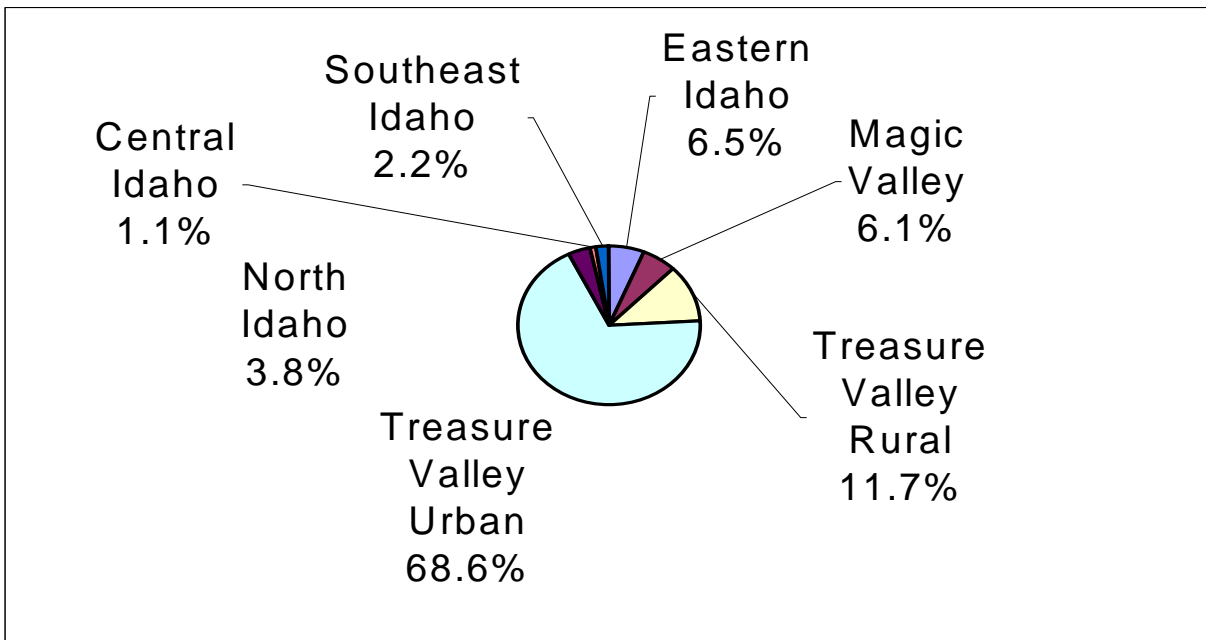
Top States (from original permanent address)

	Number	Percent
Idaho	1930	85.4%
California	55	2.4%
Washington	55	2.4%
Oregon	47	2.1%
Nevada	26	1.1%
Montana	22	1%
Alaska	15	<1%
Arizona	11	<1%
Utah	10	<1%
Texas	8	<1%
Colorado	7	<1%
Maryland	5	<1%
Wyoming	5	<1%
<i>Total US States Represented</i>	<i>34</i>	

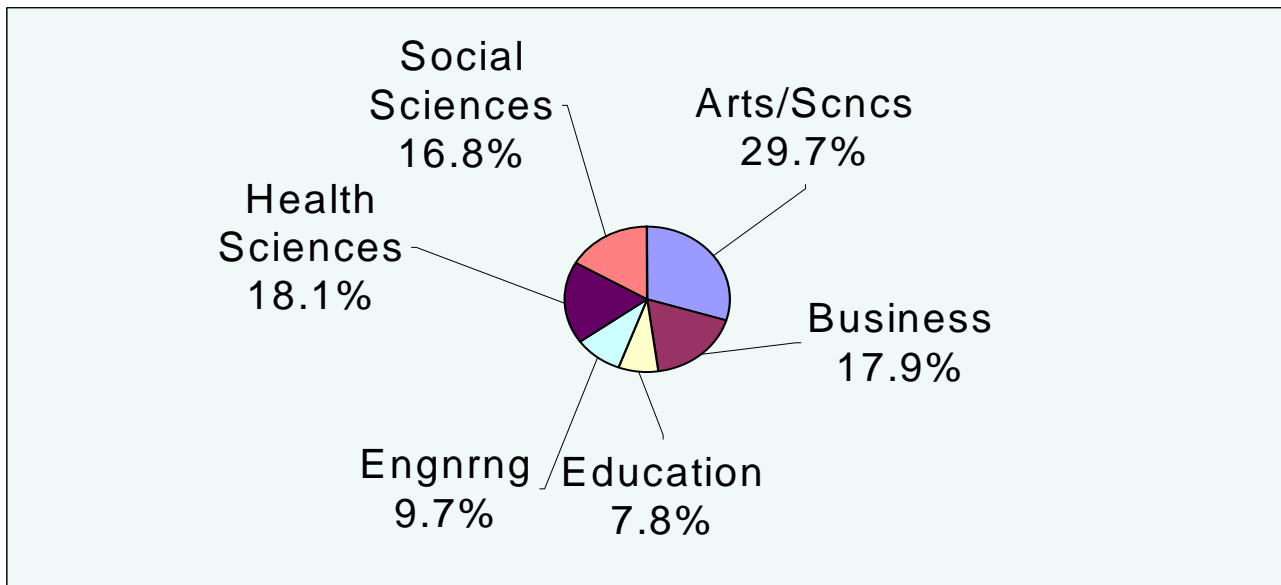
Top Cities

	Number	Percent
Boise	747	33%
Meridian	207	9.2%
Nampa	185	8.2%
Eagle	76	3.4%
Caldwell	71	3.1%
Idaho Falls	63	2.8%
Mountain Home	50	2.2%
Emmett	40	1.8%
Kuna	29	1.3%
Pocatello	23	1%
Burley	20	<1%
Twin Falls	17	<1%
Sandpoint	17	<1%
Parma	16	<1%
Coeur d'Alene	15	<1%
Payette	14	<1%
Hailey	14	<1%
Fruitland	13	<1%
Post Falls	13	<1%
Blackfoot	12	<1%
Middleton	12	<1%

Idaho Recruitment Regions:



College of Major



Top Majors

	Number	Percent
Undecided	292	12.5%
Pre-Nursing	135	5.8%
Business-Undeclared	114	4.9%
Psychology	112	4.8%
Pre-Medicine	78	3.3%
Biology	70	3%
Music	68	2.9%
General Business Management	62	2.7%
Elementary Education	59	2.5%
Business Economics	57	2.4%
Political Science	55	2.3%
Computer Science	52	2.2%
Mechanical Engineering	51	2.1%
Communication	50	2.1%
Criminal Justice	48	2%
General Engineering	47	2%
Education Undeclared	45	1.9%

Years From High School

	Number	Percent
Straight from High School	1751	77.4%
1 Year From High School	144	6.4%
2 Years from High School	64	2.8%
3 Years from High School	84	3.7%
4 Years from High School	36	1.6%
5-10 Years from High School	124	5.5%
More than 10 Years	58	2.6%

Top High Schools

	Number	Percent
GED Idaho	123	5.4%
Mountain View	118	5.2%
Borah	116	5.1%
Centennial	112	5%
Capital	110	4.9%
Eagle	93	4.1%
Meridian	93	4.1%
Timberline	83	3.7%
Boise	75	3.3%
Nampa	53	2.3%
Mountain Home	46	2%
Kuna	38	1.7%
Vallivue	35	1.5%
Caldwell	33	1.4%
Emmett	33	1.4%
Foreign High School	30	1.3%
Bishop Kelly	28	1.2%
Idaho Falls	27	1.1%
Skyview	23	1%
Middleton	23	1%
Skyline	21	<1%
Home School	20	<1%
Wood River	20	<1%
Sandpoint	19	<1%

High School GPA

	Number	Percent
4.0	74	3.9%
>=3.99	701	34.1%
3.0-3.49	825	40.1%
2.5-2.99	441	21.5%
2.0-2.49	80	3.9%
<2.0	9	.4%
Average GPA (straight from high school)		3.32
Average GPA (overall new freshmen)		3.28

High School Class Rank

	Number	Percent
1st (n=30) 2nd (n=12) 3rd (n=14)	56	3.1%
Top 10% (includes 1st, 2nd, 3rd)	192	10.6%
Top Quarter (includes top 10%)	586	32.2%
Second Quarter	708	39%
Third Quarter	425	23.4%
Bottom Quarter	99	5.4%
Average Class Rank		62 nd percentile

ACT Scores

	Number	Percent
Top Quarter (24-36 Comp)	484	28%
Second Quarter (21-23 Comp)	537	31%
Third Quarter (17-20 Comp)	572	33%
Bottom Quarter (1-16 Comp)	142	8%
Average ACT Composite		21.5